

PCBs

FROM SINGLE SIDED
TO OVER 50 LAYERS



BESPOKE STOCK MANAGEMENT
RELIABLE PARTNERSHIPS

GLOBAL LEADERS IN PCBs

Supply & Stock Management Specialists



Effective sourcing of Printed Circuit Boards (PCBs) requires commitment, time, and experience. Matching the technical and commercial requirements of clients to the capabilities of a manufacturing plant is a vital part of what we do.



We provide a total PCB Supply and Stock Management solution with over 50 years of PCB engineering, manufacturing, and logistics experience in our group. We can attribute our success to our expertise and commitment to quality.



To build on our enviable track record of growth and smart investment, we will continue to provide unrivalled 'Excellence in Logistics' to all our clients. In doing so, we will maintain our place as one of the leading forces in the PCB industry.



W: www.daleba.co.uk
E: sales@daleba.co.uk

T: +44(0) 1992 510000



Daleba, GSPK & TCL Elektronika

A strong group of UK based companies currently turnover over £31m -



Local Fast-Turn & Prototyping



Far East & UK PCB Supply



Far East & EU PCB Supply

DALEBA
Printed Circuits

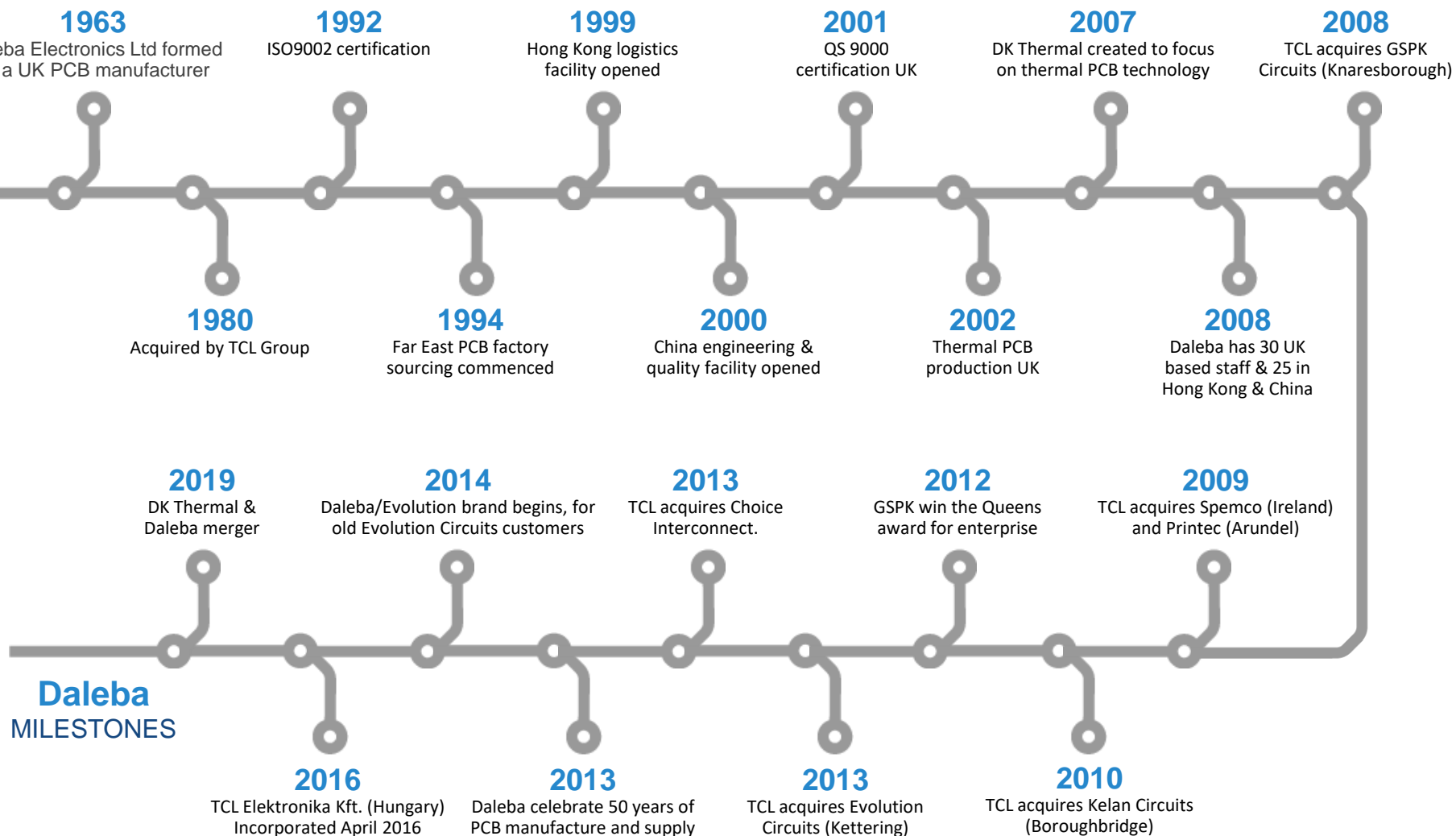
W: www.daleba.co.uk
E: sales@daleba.co.uk

T: +44(0) 1992 510000



ISO
9001 : 2015
REGISTERED

ABOUT



Daleba MILESTONES



W: www.daleba.co.uk
E: sales@daleba.co.uk

T: +44(0) 1992 510000





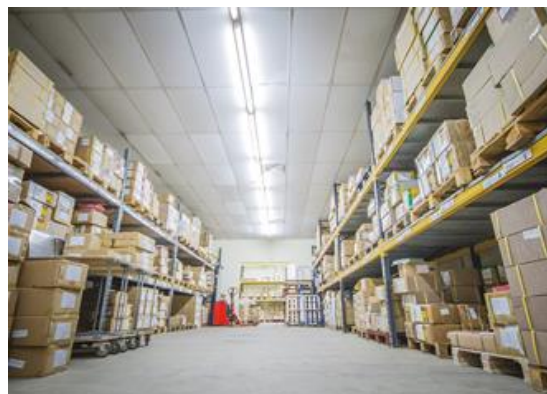
ENGINEERING

Our dedicated engineers will focus on finding the best PCB solutions for your needs

Our engineering services include design for manufacture

We have UK and China Engineering Teams and all PCB Manufacturing Specification issued to partners

We perform full engineering reviews prior to production and individual specifications are issued for each PCB. Inspection reports received for each batch produced



STOCK MANAGEMENT

Bespoke stock management is our speciality, which means we'll find solutions for every requirement.

Our stock management team will monitor your usage against forecasted levels to ensure that production lines are kept running. This includes consignment stock, buffer stock, Kan Ban, JIT and ship to schedule.



GLOBAL LOGISTICS

Stress-free, on time, and without any of the headaches that logistics can cause: that's how we deliver!

Our range of shipment options ensure you receive your order in the right place and at the right time, anywhere in the world.



W: www.daleba.co.uk
E: sales@daleba.co.uk

T: +44(0) 1992 510000



ISO
9001 : 2015
REGISTERED

ADDING VALUE

- ✓ Client cost benefits – without the cultural & communication challenges
- ✓ Our own skilled Engineering & Quality staff in both Europe & Asia
- ✓ In depth knowledge of Chinese PCB Fabrication partners (Capabilities/Approvals/Expertise)
- ✓ “Best-fit” factory selection – multiple PCB Fab partners
- ✓ Tried & tested logistics – local contact points, Heathrow, Stansted & London Gateway.
- ✓ Quality underwritten
- ✓ All PRC factory partners are subject to regular annual audits by our staff and our customers – supply-line transparency



UK factory for up to 16 layers



Dedicated to “Lean” manufacturing”



Fast turnaround of prototyping and mass production with IATF 16949, ISO 9001:2015, UL: E53704 (US & Canadian approvals)



Quality Assurance Dedicated UK and China QA Teams



ISO 9001:2015 Certification
Factory IATF 16949 Certification



AS9100



W: www.daleba.co.uk
E: sales@daleba.co.uk

T: +44(0) 1992 510000



ISO
9001 : 2015
REGISTERED

CAPABILITIES

UK or Far East Manufactured

- ✓ We can produce IMS, Ceramic, Long Boards and Heavy Copper PCBS.
- ✓ For your FR4 requirements, we can manufacture PCBs ranging from single-sided, to complex boards in excess of 50x layers.



In-house CAM
engineering resources



Globally available
lamine materials:
Shengyi, Kingboard,
Iteq, Ventec, Nelco,
Rogers, Isola and
other RF/High
Frequency materials



Special requirements
available such as:
Selective gold plating
for edge connectors,
Peel-able solder resist,
carbon pad printing



Full range of solder
resist and ident
colours to suit the
application



All boards supplied
100% electrically
tested



UL certification for the
technology and layer
count available



DALEBA
Printed Circuits

W: www.daleba.co.uk
E: sales@daleba.co.uk

T: +44(0) 1992 510000



ISO
9001 : 2015
REGISTERED

CAPABILITIES

Heavy Copper – High Power Applications

- ✓ Heavy copper PCBs are printed circuit boards with 3oz or more of finished copper in the inner and/or outer layers
- ✓ We also have the capability of Extreme Heavy Copper – up to 30oz per layer for 2 layer applications
- ✓ The construction of a heavy copper circuit give boards a number of benefits



Increased endurance
to thermal strains



Increased current
carrying capacity



Increased mechanical
strength at connector
sites and in PTH
holes



Reduced product size
by incorporating
multiple copper
weights on the same
layer of circuitry

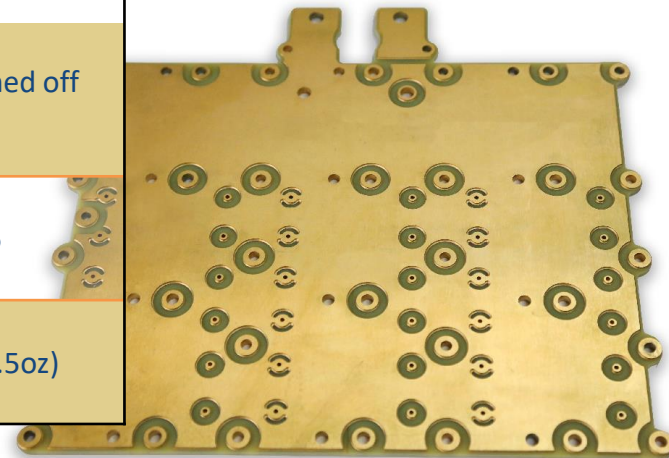
1.00mm Copper Base Plate (28.5oz)

1x Prepreg type = EM8271 106

2.4mm Core H/H EM8271 (Etched off
copper)

1 x Prepreg type = EM8271 106

1.00mm Copper Base Plate (28.5oz)



DALEBA
Printed Circuits

W: www.daleba.co.uk
E: sales@daleba.co.uk

T: +44(0) 1992 510000

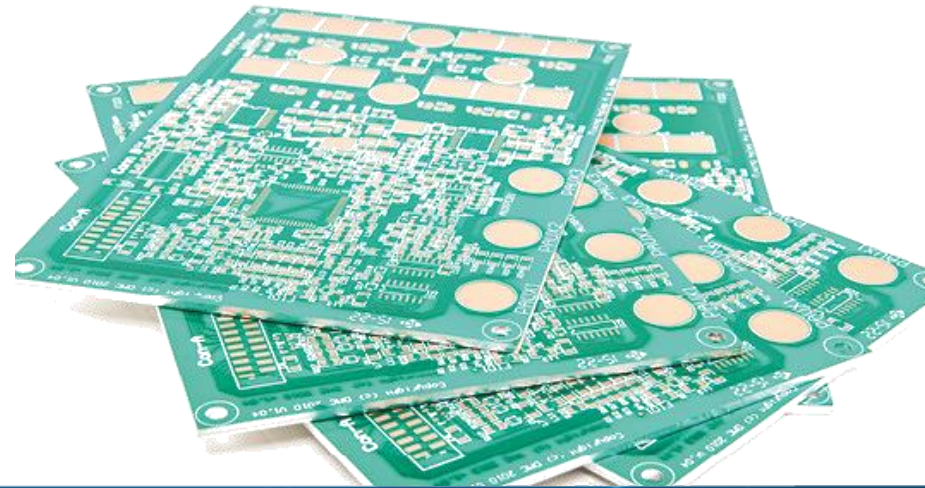
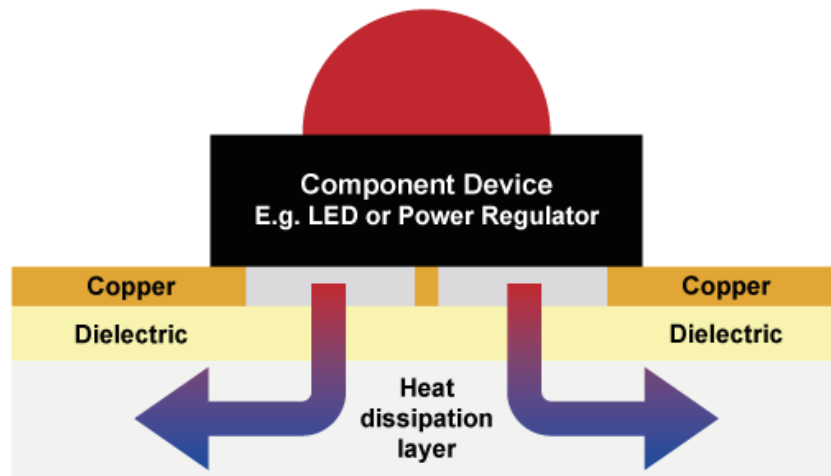


ISO
9001 : 2015
REGISTERED

CAPABILITIES

Metal Clad PCBs – Thermally Conductive

- ✓ Efficient heat transfer from component to heat sink.
- ✓ Aluminium or Copper based substrates with an electrically insulating, thermally conductive dielectric layer.
- ✓ Thermal Conductivity options ranging from 1W/mK to 9W/mK
- ✓ A range of material options: Ventec, Denka, Bergquist, Laird, Doosan etc.
- ✓ Applications include: Automotive lighting and power, street lighting, hazardous area lighting, LED luminaires, high power.
- ✓ Long boards capability – up to 1.5m in length



W: www.daleba.co.uk
E: sales@daleba.co.uk

T: +44(0) 1992 510000



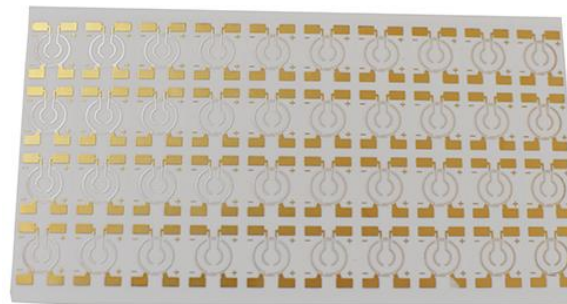
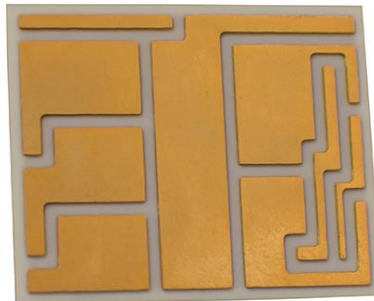
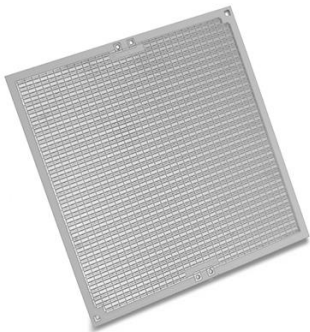
ISO
9001 : 2015
REGISTERED

CAPABILITIES

Ceramic PCBs

Superior heat dissipation is the key advantage that Ceramic has over more conventional materials used for PCB production.

- ✓ Superior values of Thermal Conductivity (up to 180W/m-K)
- ✓ High operating temperatures over 350°C
- ✓ Very Low CTE (Coefficient of Thermal Expansion)
- ✓ Suitable for high frequency applications due to low signal loss
- ✓ Possibility for Hermetic packages with 0% water absorption
- ✓ Alumina Oxide (Al_2O_3), AlN (Aluminium Nitride) and SiN (Silicon Nitride) options available
- ✓ DPC (Direct plated copper) & DBC (Direct bonded copper) used for circuitry



W: www.daleba.co.uk
E: sales@daleba.co.uk

T: +44(0) 1992 510000

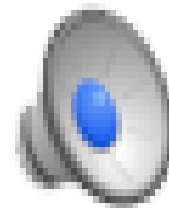


ISO
9001 : 2015
REGISTERED

CAPABILITIES

EMI Thermal – Material Distribution and Conversion THERMAL INTERFACE MATERIALS

- ✓ Electronic components being driven harder, running at higher power
- ✓ This causes heat which can result in overheating, damage and failure.
- ✓ Thermal Interface Material (TIM) helps manage this issue
- ✓ Air is a poor conductor of heat, so air gaps need to be removed.
- ✓ TIM, a thermally conductive medium is used to fill the air gap between mating surfaces in electronic components.
- ✓ With no air gap the heat is transferred between the component and its heatsink or chassis.



W: www.daleba.co.uk
E: sales@daleba.co.uk

T: +44(0) 1992 510000



ISO
9001 : 2015
REGISTERED

CAPABILITIES

EMI Thermal – Material Distribution and Conversion EMI/EMC/RFI MATERIALS



- ☑ Electromagnetic Compatibility (EMC) is a vital part of any new component design
- ☑ The unit must operate without emitting or being susceptible to electromagnetic waves
- ☑ The drive for higher integration, smaller electronics devices and fast speeds, problems with both Electromagnetic interference (EMI) and Radio Frequency Interference (RFI) continue to increase
- ☑ To help you manage this we have a range of shielding products to confine emissions to a certain area within the unit
- ☑ This shielding is also used to stop external emissions or signals penetrating and corrupting the electronics from outside



W: www.daleba.co.uk
E: sales@daleba.co.uk

T: +44(0) 1992 510000



ISO
9001 : 2015
REGISTERED

BREXIT PLAN

EUROPEAN LOCATIONS

The UK left the EU on 31st January 2020.

No changes to any trading arrangements will occur during the transition period of 2020.

DK-Daleba has already made contingencies if any trade obstacles occur in 2021

Our European hub TCL Electronika is ready to receive stock from our Asia facilities and distribute product to our European customers without transiting via our UK warehouse



● HERTFORD ● BUDAPEST

DALEBA
Printed Circuits

W: www.daleba.co.uk
E: sales@daleba.co.uk

T: +44(0) 1992 510000



ISO
9001 : 2015
REGISTERED

SUMMARY



UK & Far East supply capability



Single sided through hole, multilayer & flexi/flexi-rigid



Complete thermal management solutions



Prototyping UK & FE



DFM



Metal Circuit Boards



Ceramic Circuits



Proven Logistics



Tried & tested inventory management models



Local, highly experienced, account management & support



European group offices in Spain, Hungary and Ireland



Global track record for delivering excellence

DALEBA
Printed Circuits

W: www.daleba.co.uk
E: sales@daleba.co.uk

T: +44(0) 1992 510000



ISO
9001 : 2015
REGISTERED

Thank you for your time today!



ORLAND HOUSE
MEAD LANE, HERTFORD
HERTFORDSHIRE SG13 7DJ
UNITED KINGDOM
www.daleba.co.uk
sales@daleba.co.uk

+44(0) 1992 510000